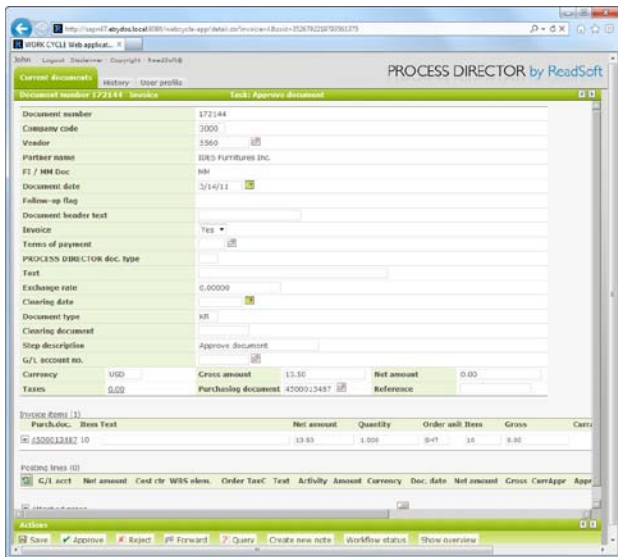


An electronic workflow for processing invoices in SAP®

WORK CYCLE takes over after ReadSoft's PROCESS DIRECTOR Accounts Payable has verified your incoming invoices in SAP. The invoices are routed to the correct people who can approve them or pass them on for further processing.

SAP users can handle exceptions, coding and invoice approval inside their familiar SAP environment. WORK CYCLE uses your existing SAP system which means that users can work in an environment they know well.

Users can also connect via a Web browser and approve invoices wherever they are. This means no more bottlenecks when people are out of the office.



When an invoice needs attention, the user receives an email with a link to this Web interface where they can easily approve the invoice or forward it for further processing.

Suitable for you if:

You are an SAP user wanting to speed up your invoice processing.

With WORK CYCLE, you will:



Speed up invoice processing

Electronic approval is much faster than manual processing.



Get faster and more accurate payments

This enables you to negotiate better discounts from your suppliers



Improve control over your invoice process

You can always see where invoices are in the flow.



Get a smooth workflow

No more bottlenecks just because people are out of the office.



SAP® Certified
Powered by SAP NetWeaver®

Technical capabilities

- Quickly obtain all information on release and account assignments.
- Easily clarify discrepancies between an invoice and the goods received.
- Check price deviations.
- Effectively integrate people into the process via a Web browser.
- Use the SAP Business Workflow whenever it is needed.
- Keep all data within SAP.

Business system integration

WORK CYCLE is a part of ReadSoft's invoice processing solution for SAP which works seamlessly inside SAP.

WORK CYCLE: Hard Facts

ReadSoft SAP Products

- PROCESS DIRECTOR
- WORK CYCLE
- EDI COCKPIT
- WEB BOARD
- MOBILE APPROVAL
- INFO MAIL

PROCESS DIRECTOR runs inside SAP and comes with an SAP interface and web browser interface.

WORK CYCLE provides a workflow engine inside PROCESS DIRECTOR allowing you to easily bring the business process in front of the right people.

MOBILE APPROVAL brings AP invoice workflow onto the mobile device.

EDI COCKPIT is an electronic entrance for EDI enabled processes.

Relevant SAP releases

- SAP R/3 Release 4.6C
- SAP R/3 Enterprise 4.7
- SAP ECC 5.0 (also known as mySAP ERP 2004)
- SAP ERP 6.0 (also known as mySAP ERP 2005)



Graphical user interface localization

- Czech
- Dutch
- English
- French
- German
- Hungarian
- Italian
- Japanese
- Polish
- Portuguese
- Romanian
- Russian
- Simplified Chinese
- Slovenian
- Spanish
- Swedish
- Turkish

Web Application server requirements

Java versions

- Java Runtime 5
- Java Runtime 6

Web application server – 100% J2EE compatible with:

- Java Servlet 2.4
- Java Server Pages JSP 2.0
- SAP Java Connector (JCO 2.0.10 or later)

Recommended servers

- Apache Tomcat 5.5.x
- Apache Tomcat 6.0.x

Recommended operating systems

- Microsoft Windows 2000
- Microsoft Windows XP
- Microsoft Windows 2003 Server
- Microsoft Windows 7
- Microsoft Windows Server 2008
- Microsoft Windows Server 2008 R2

Processor speed

- 2.0 GHz or faster

Memory

- 1 GB RAM or more

For a high number of users working in parallel, we recommend a minimum of 2 GB RAM.

Hard drive

- 10 - 20 GB of free space

Related products

DOCUMENTS

www.readsoft.com

READSOFT®